



## Sample Question paper for online CET 2022

Time: 30 Min.

Marks: 50

### Subject : Mathematics

- Q. 1 The smallest whole number divisible by 10 and 12 is .....
- A. 40                      B. 30                      C. 72                      D. 60                      (1 Marks)
- Q. 2 Which is a proper fraction among the following .....
- A.  $30/7$                       B.  $3/5$                       C.  $17/12$                       D.  $6/4$                       (1 Marks)
- Q. 3 How many lakhs make a crore ?
- A. 10                      B. 100                      C. 1                      D. 1000                      (1 Marks)
- Q. 4 Decimal representation for 79% is .....
- A. 7.9                      B. 0.79                      C. 79                      D. 790                      (1 Marks)
- Q. 5 How many right angle are there in a square :
- A. 2                      B. 3                      C. 4                      D. 0                      (1 Marks)
- Q. 6. These numbers have only '1' and itself as factors.....
- A. Even                      B. Odd                      C. Prime                      D. Composite.                      (1 Marks)
- Q.7. These numbers cannot be prime factorized.....
- A. Even                      B. Odd                      C. Prime                      D. Composite.                      (1 Marks)
- Q. 8. What is difference between 25% of 50 and 50% of 25 ?
- A. 0                      B. 10                      C. 5                      D. 1                      (1 Marks)

Q. 9. The missing number in the ratio  $5 : 9 = 45 : \dots\dots$  is

A. 81

B. 40

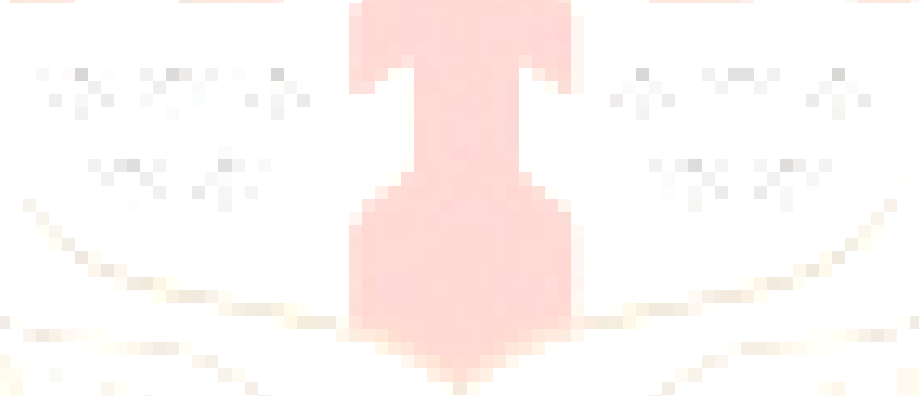
C. 5

D. 14

(2 Marks)

Q. 10 The area and perimeter of a rectangle with length 13 m and breadth 12 m

A. 156sq m, 50m B. 156 sq cm,50cm C. 156 m,60m D. 156 cm, 60cm (5 Marks)



# Sample Question paper for online CET 2022

Time: 30 Min.

Marks: 50

## Subject: Science

Q1. Earth is a

- Option 1: Star
- Option 2: Planet
- Option 3: Galaxy
- Option4: Constellation

Q2. Which of the following is the control centre of our body?

- Option 1: Stomach
- Option 2: Heart
- Option 3: Liver
- Option4: Brain

Q3: Consider the two statements:

Statement A: Dry cell possesses chemical energy.

Statement B: Rock on top of a mountain possesses potential energy.

Which of the statement is correct with respect to the above statements?

- Option 1: Statement A is true and statement B is false
- Option 2: Statement A is false and statement B is true
- Option 3: Both are true
- Option4: Both are false

Q4: Consider the two statements:

Statement A: Sputnik is a natural satellite.

Statement B: A satellite has light of its own.

Which of the statement is correct with respect to the above statements?

- Option 1: Statement A is true and statement B is false
- Option 2: Statement A is false and statement B is true
- Option 3: Both are true
- Option4: Both are false

Q5: Coal mainly consists of

- Option 1: Carbon
- Option 2: Nitrogen
- Option 3: Oxygen
- Option4: Hydrogen

Q6: Hepatitis B is caused by.....

- Option 1: virus
- Option 2: bacteria
- Option 3: algae
- Option4: all of these

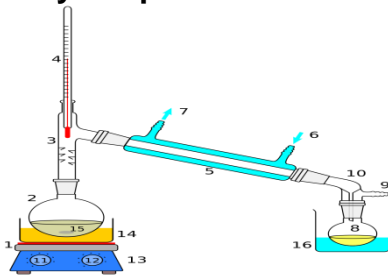
**Q7:** A force of 10 N acts on a body towards east. Work done when the body moves a distance of 2 m in the south direction is:

- Option 1:** 5 N
- Option 2:** 20 N
- Option 3:** 0 N
- Option4:** 10 N

**Q8:** Which of the following represents the correct formulae of Iron?

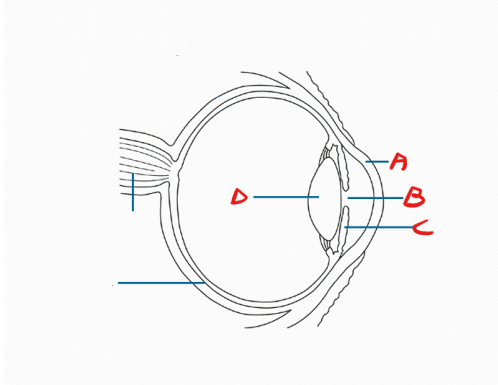
- Option 1:** IR
- Option 2:** FE
- Option 3:** Ir
- Option4:** Fe

**Q9:** Identify the process:



- Option 1:** filtration
- Option 2:** sedimentation
- Option 3:** distillation
- Option4:** none of these

**Q10:** Identify the parts A,B, C and D in the diagram of the eye given below:



- Option 1:** A: Lens, B: Cornea, C: Iris, D : Pupil
- Option 2:** A: Cornea, B: Pupil, C: Iris, D : lens
- Option 3:** A: Lens, B: Pupil, C: Iris, D : Cornea
- Option4:** A: Cornea, B: lens, C: Iris, D : pupil

# Sample Question paper for online CET 2022

Time: 30 Min.

Marks: 50

## Subject: English

**A. Read the following passage carefully and answer the questions that follow:**

5

Frogs are amphibians; they are cold blooded animals and they need moisture to survive. Their skin is very special because it doesn't just act as a protective covering. Frogs actually drink and breathe through their skin! They enjoy themselves in the rainy season, croaking hoarse, but in summer they need to bury themselves under the soil in tanks, wells and lakes to keep themselves cool in the moist mud. There are many varieties of frogs. There is the tree frog with sticky pads on its feet, which enable it to cling to any surface, like a tree's bark, a pane of glass or even the top of a chair. There is also a little water frog called a leopard frog because it is spotted like a leopard.

**Q.1.** What kind of animals are frogs?

1

- a. Warm blooded
- b. Cold blooded
- c. Yellow blooded
- d. Blue blooded

**Q.2.** What do the frogs do in summer?

1

- a. Jump around
- b. Feel happy
- c. Bury themselves
- d. Stay in tanks

**Q.3.** In which season do the frogs enjoy themselves?

1

- a. Winter
- b. Summer
- c. Spring
- d. Rainy

**Q.4.** What do the tree frogs have on their feet?

1

- a. Sticky pads
- b. Slippery pads
- c. Rough pads
- d. Smooth pads

**Q.5.** The frogs drink and breathe through their

1

- a. nose
- b. gills
- c. skin
- d. legs

**B. Fill in the blanks with the most appropriate Prepositions:**

3

Q. 1. Last year I went \_\_\_\_\_ Delhi and Agra with my parents.

1

- a. in
- b. to
- c. for

Q. 2. There we visited a number \_\_\_\_\_places worth seeing. 1  
a. with  
b. for  
c. of

Q. 3. The Taj is a magnificent building which is situated \_\_\_\_\_the bank 1  
of the river Yamuna.  
a. at  
b. on  
c. in

**C.** Fill in the blanks with the most appropriate form of the verb: 2

Q. 1 The ice-cream \_\_\_\_\_ in my hands. 1  
a. melts  
b. melted  
c. melting

Q.2 Someone has \_\_\_\_\_ my chocolates from my cupboard. 1  
a. stole  
b. steal  
c. stolen